

Lucia is een populaire geverfde doeksoort voor indoor gebruik. De stof is zeer elastisch en leent zich ideaal voor het overspannen van kaders. Deze is in verschillende standaardkleuren beschikbaar.

Materiaal	100% gerecycleerd polyester
Gewicht	260 g/m ² (±5 %)
Brandwerend	B1 Flame-retardant
Bedrukking	/
Max. breedte	500 cm
Textuur	mat, grove structuur, geluidsdoorlatend
Afwerking	zomen, afwerken met diverse artikelen zoals band, klittenband, pees enz.
Toepassingen	vooral toepassingen ter verbetering van de akoestiek.
Indoor / outdoor	indoor



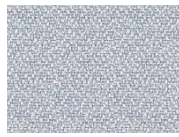


BLUE LABEL

LUCIA



Adobo
YB165



Rum
YB086



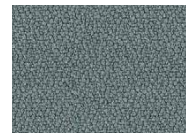
Turtle
YB098



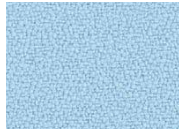
Apple
YB096



Madura
YB156



Blizzard
YB108



Arecibo
YB099



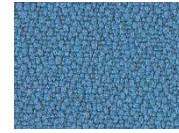
Bermuda
YB084



Marianna
YB157



Scuba
YB089



Martinique
YB004



Paseo
YB019



Bluefield
YB021



Campeche
YB301



Windjammer
YB047



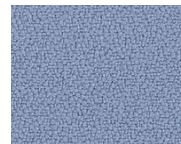
Montserrat
YB011



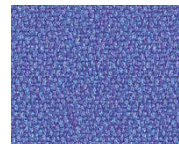
Taboo
YB045



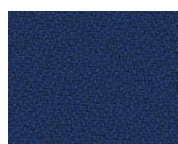
Havana
YB009



Steel
YB095



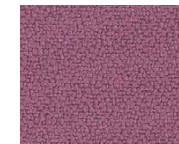
Bluebell
YB097



Curacao
YB005



Mauve
YB069



Bridgetown
YB102



Tortuga
YB168



Sombrero
YB046



Costa
YB026



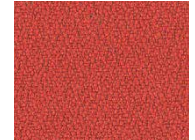
Tarot
YB090



Ocean
YB100



Cayman
YB024



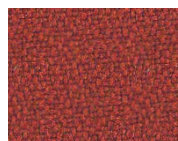
Lobster
YB087



Diablo
YB101



Belize
YB105



Jamaica
YB027



Calypso
YB106



Tobago
YB030



Slip
YB094



Reef
YB085



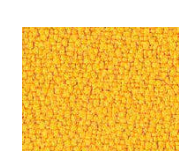
Oyster
YB107



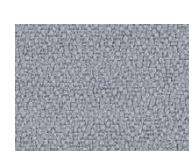
Aruba
YB093



Sandstorm
YB302



Solano
YB088



Buru
YB170

Note: Photographic fabric scans are not colour accurate. Always request actual fabric samples before ordering.

